

ieexplora!

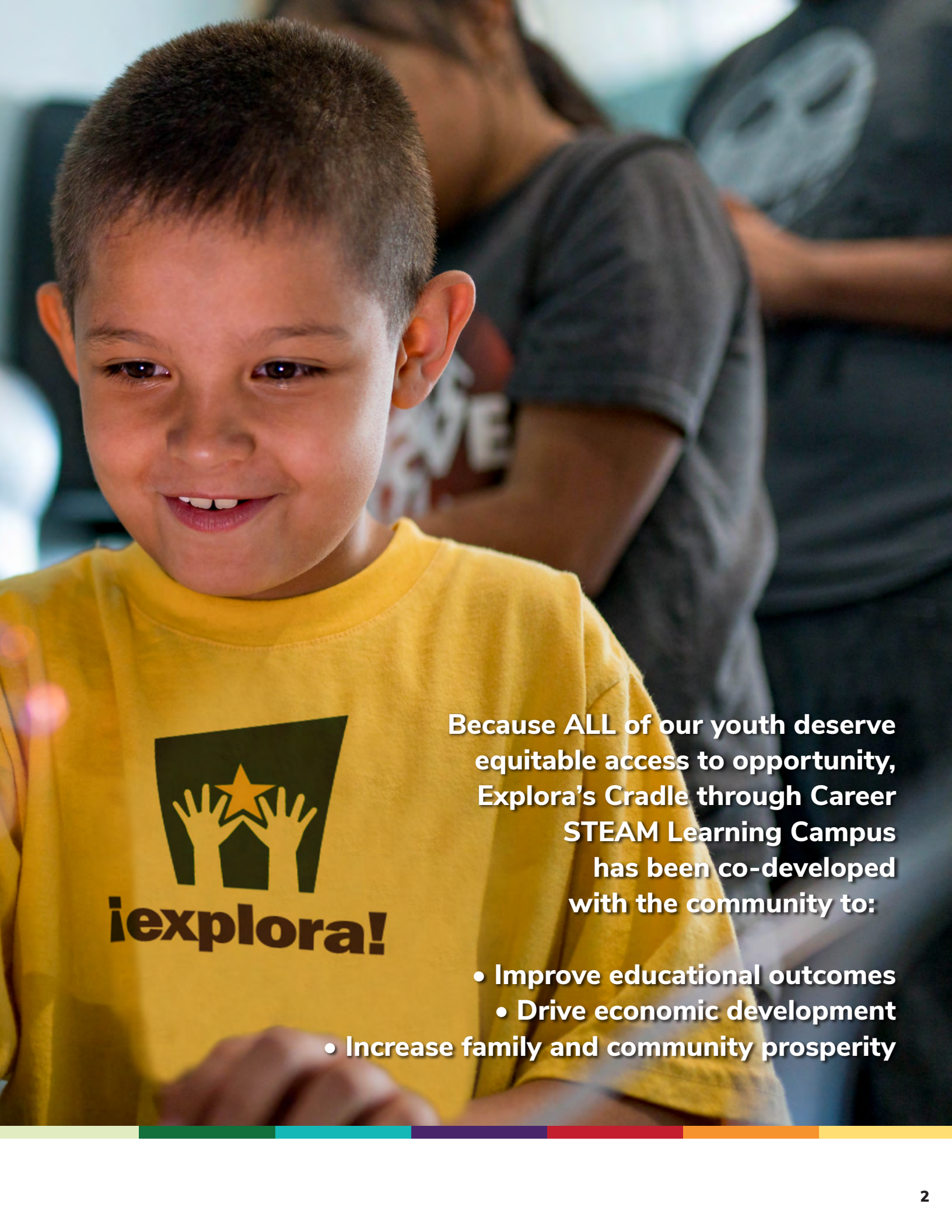
**NEXT GREAT
MINDS
CAMPAIGN**

**Cradle through Career
STEAM Learning Campus**





**Engaging,
Educating, &
Employing
New Mexico's
Next Great Minds!**



Because ALL of our youth deserve equitable access to opportunity, Explora's Cradle through Career STEAM Learning Campus has been co-developed with the community to:

- **Improve educational outcomes**
- **Drive economic development**
- **Increase family and community prosperity**



CREATING LIFELONG PATHWAYS

New Mexico has unparalleled natural beauty, growing cities and vital industries, the leading scientific minds in the nation, and committed community leaders. Yet, we face serious educational and economic challenges. How will Explora's new Cradle through Career STEAM Learning Campus address these issues?

New Mexico currently ranks 50th in education and overall child well-being (KIDS COUNT 2023).

Explora's new Campus will build long term solutions that start early and keep children on STEAM pathways to drive economic and educational outcomes.

The achievement gap between kids in poverty and their more economically advantaged peers is evident as early as the child's first 18 months (Hart & Risley, 1995).

Explora's new Campus will provide high-quality early education for low-income families. Our little ones will have access to educational experiences that eliminate achievement and opportunity gaps, while their parents finish school and attend work to support their young families.

One-fifth of New Mexico's population lives in poverty, ranking it second-worst in the nation. Better preparing New Mexicans for local, high-paying STEAM jobs will increase prosperity.

Explora's new Campus will prepare students for the 21st-century workforce and STEAM careers, employ underrepresented young adults in STEAM-related jobs, accelerate innovation and entrepreneurship, and generate private investment.



WHY EXPLORA?

Kids are out of school much more than they're in school. In fact, at high school graduation, a student will have spent only 9% of his or her waking hours in school (Sosniak, 2001).

Experiences outside of school—at places like Explora—are essential components of our youth's education and development. Every child deserves access to spaces where he or she can learn and grow, question and experiment, succeed and fail, and journey along pathways to STEAM careers.

That's why Explora is developing a **Cradle through Career STEAM Learning Campus** to house the award-winning Explora science center and children's museum; the new **X Studio**, a STEAM workforce development center for teens and young adults; and **Brillante Early Learning Center** where Explora will provide high-quality early childhood STEAM education while allowing young working parents to finish their degrees and certificate programs, helping close the opportunity gaps in our state.





THERE ARE OVER 530,000 REASONS TO SUPPORT THIS CAMPAIGN



They ask lots of questions. They love to explore and experiment. They have varied backgrounds, interests, and abilities, but they ALL crave knowledge and safe places to play and learn. They are our future. New Mexico's 530,000 young people deserve the best and most innovative education possible. Explora needs your help to raise \$10M to make this vision a reality for the state's **Next Great Minds**.



As phase one, Explora opened X Studio in February 2023 to support New Mexico's students, especially low-income students of color, on STEAM career pathways. X Studio is a world-class STEAM education and workforce development center, connecting local teens and young adults with STEAM professionals, employers, and intensive study and work experiences.



Brillante, phase two of the project, will be a Reggio-inspired, museum-based early learning center that will serve as the lab school for local higher education institutions, like CNM, and provide high-quality early childhood STEAM education that can close the opportunity and achievement gaps in our state. The first Brillante pilot classroom opened at Explora in August 2023.

STEAM EDUCATION AND EXPERIENCES THAT WILL EMPOWER OUR **NEXT GREAT MINDS**





- 1 Rail Spur Corridor
- 2 Possible Future Parking; Community Resource Center
- 3 Brillante Early Learning Center
- 4 Connection to Tigüex Park

A NEW CAMPUS IN OLD TOWN

For the past 20 years, Explora has thrived in Old Town, Albuquerque, adjacent to exemplary museums, art centers, parks, and the Old Town, Sawmill, and Wells Park neighborhoods, all of which have a long, proud history. Explora is honored to be part of this community.



- 5 Pedestrian Walkways
- 6 X Studio
- 7 Outdoor Learning Space
- 8 Explora
- 9 Tiguex Park Open Space

After years of planning, Explora is expanding on our current site and on an additional 4.5-acre parcel across 18th Street. This expansion will allow Explora to greatly increase the number of community members we serve and double our program space. The **Next Great Minds Campaign** will support our immediate needs for expansion, as well as planned growth over the next ten years.



X STUDIO NOW OPEN!

EDUCATION FOR THE FUTURE OF NEW MEXICO

X Studio is Explora's teen center: a place to hang out, experiment, create, and learn. X Studio brings teens and their dreams together with cutting-edge tools, technologies, and mentors—all with a focus on STEAM (science, technology, engineering, art, and math). It provides intensive physics, chemistry, robotics, design, film, and coding programs; engineering and fabrication opportunities in a Makerspace with Makers-in-Residence; mentor programs and events that bring together scientists, engineers, and young adults to articulate pathways to STEAM careers; interactive exhibitions highlighting local STEAM industries and job opportunities; a paid internship program which employs 35 young adults; wraparound services, like mental health support and financial literacy classes; and more!

FUNDED, THANKS TO YOU!



STEM IN THE
BURQUE **E**

BUILDING THE WORKFORCE BY CARING FOR YOUNG CHILDREN



The number-one reason New Mexico's young adults don't finish their degrees and certificate programs? Lack of childcare. **Brillante** will be the state's only full-time, museum-based STEAM early learning center. Inspired by the world-famous Reggio Emilia principles, it will serve about 125 infants, toddlers, and young children with rich STEAM learning experiences, keeping them safe and engaged while their parents finish their programs at partner higher-education institutions, including CNM.



+ Invest

Invest in educational resources for low-income families, supporting parents as they finish their own schooling and work to make better lives for their children.

+ Develop

Nurture early development of cognitive and social skills in children from birth to age five, closing the opportunity and achievement gaps.

+ Sustain

Sustain early development with effective education through adulthood, keeping children on pathways to careers.

= Gain

Gain a more capable, productive, and valuable workforce that pays dividends to New Mexico for generations to come. Investing in early childhood education has been proven to have the highest return on investment. (heckmanequation.org)

A TRUSTED ORGANIZATION, PAST, PRESENT, AND FUTURE



iexplora!

i20!
YEARS

20 YEARS ON MOUNTAIN RD IN THE HISTORIC SAWMILL DISTRICT



\$8.5 MILLION

ANNUAL LOCAL ECONOMIC IMPACT



4.8 MILLION

TOTAL ATTENDANCE SINCE 2003



23,868

NO-COST FAMILY MEMBERSHIPS ISSUED THROUGH 108 COMMUNITY PARTNER ORGANIZATIONS



iexplora!

250+

OVER 250 HANDS ON EXHIBITS



2,800
EDUCATIONAL PROGRAMS DELIVERED TO MORE THAN
100,000
STUDENTS A YEAR

\$7 MILLION ANNUAL BUDGET



50,000+

50,000 SQUARE FOOT FACILITY WITH MULTIPLE BUILDING EXPANSIONS

4,802 ADULTS

AND

4,498 CHILDREN

ATTEND TODDLER TIME ANNUALLY



123 FAMILIES

PARTICIPATED IN SEMESTER-LONG FAMILY PROGRAMS

Explora gets incorporated as a 501(c)(3) nonprofit organization.

1984



Explora opens a new 50,000 sq. ft. experiential learning center in Old Town Albuquerque, offering hands-on exhibits, science classes, and summer camps to support schools and families.

2003



Explora receives the National Medal for Museum and Library Service, awarded by the federal Institute for Museum and Library Services, for authentic community engagement.

2010



Explora Science Center merges with the Albuquerque Children's Museum.

1995



Explora secures its first National Science Foundation grant, bringing federal funding for science education to New Mexico.

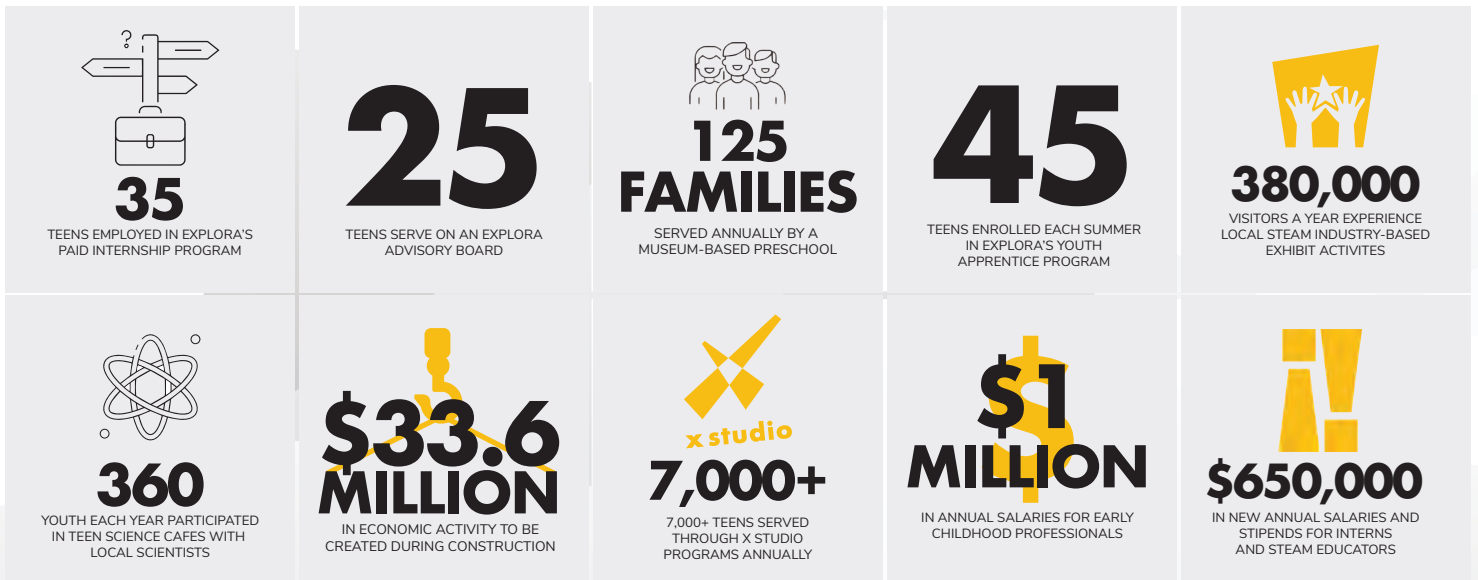
2007



Explora co-hosts the international Association of Science-Technology Centers' annual conference, bringing 1,700 museum professionals, \$1.6M, and international recognition to Albuquerque.

2013

EXPANDING IMPACT THROUGH OUR NEW STEAM LEARNING CAMPUS



Explora becomes the backbone organization for STEM-NM and receives national designation as the state's STEM Learning Ecosystem by the STEM Funders Network.

2016



Explora launches a \$10M capital campaign with 100% board approval, in order to develop a Cradle through Career STEAM Learning Campus in Old Town.

2019



Explora breaks ground on the new Cradle through Career STEAM Learning Campus.

2020



2018

Explora launches its Cradle through Career STEAM Learning Strategic Focus to engage, educate, and employ New Mexico's future scientists, engineers, and innovators.



2019+

Explora continues to listen, welcome, and co-create with partner organizations and to use the systems thinking necessary to help solve the educational and economic challenges facing New Mexico.



2023

X Studio opens to the public. Explora houses the Coalition for Science Learning in Early Childhood and opens its first Brillante classroom in partnership with CNM.



Help us build the future home of





New Mexico's **Next Great Minds**





iexplora!

**JOIN US IN ENGAGING, EDUCATING, AND EMPLOYING
NEW MEXICO'S NEXT GREAT MINDS IN STEAM!**

Together we can prepare our youth for high-paying jobs that can impact New Mexico's economic well-being, improve access to high-quality early childhood education that allows parents to finish their degrees and starts young children on STEAM pathways early, and increase family and community prosperity.

Can We Count on You?



Joe Hastings
Co-Executive Director
jhastings@explora.us

Kristin Leigh
Co-Executive Director
kleigh@explora.us



THE NEXT GREAT MINDS CAPITAL CAMPAIGN HAS SUPPORT FROM 100% OF THE EXPLORA BOARD OF DIRECTORS.

BOARD CHAIR, 2024

Hilma Chynoweth

FUNDRAISING COMMITTEE, 2024

**Alexis Kerschner Tappan,
Committee Chair**

John Bell

Rathi Casey

Hilma Chynoweth

Jane Flax

Melissa Gomez

Annemarie Henton

Bob Murphy

Matt Oberer



iexplora!

